

# SHARP®

## A Series Professional Advanced LCD Laser Installation Projectors

XP-A824U/XP-A104U



**4K UHD**  
READY

**laser**  
light source

Professional Installation Projectors ideal for corporate,  
higher education and museum applications

# LCD laser installation projectors deliver extreme brightness and keep audiences engaged in classrooms, conference rooms and auditoriums.

## Why It Works for You

- Multi-screen wow factor - Seamlessly support Picture-by-Picture or Picture-in-Picture, and use TileMatrix to power 4Kx2K resolution across four projectors - no extra hardware needed.
- Effortless scalability - Built-in daisy chain and edge-blending let you expand visuals and merge multiple images into one seamless experience.

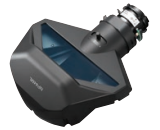
**4K UHD**  
READY

## Integrated for Smarter Performance

- 4K-Ready Brilliance - Experience stunning 4K 60P playback powered by Sharp's proprietary video processing chip. Enjoy HDR10 and BT.2020 content from Ultra HD Blu-ray and 4K broadcasts with every detail intact.
- Seamless Control - Preloaded with AMX Beacon, Crestron RoomView, Extron XTP, and PJ Link for full system integration.
- Lower Install Costs - Native competitor command support eliminates expensive reprogramming, making setup faster and more affordable.

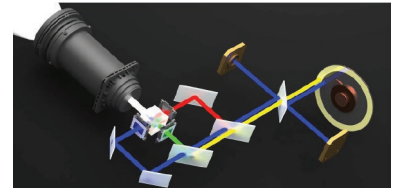
## Flexible Installation, Your Way

- Swap lenses with ease - Motorized bayonet-style lenses make changes quick, with throw distances from 2.5 to 68.5 ft.
- Ultra-short throw option - The new lens lets you mount the projector above the screen or even above the ceiling line for a clean, hidden setup.
- Any angle, any space - Roll Free design supports portrait orientation and adapts to almost any environment.



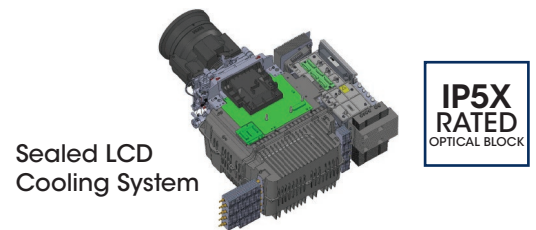
## Laser Power

- Instant on - No wait time, images appear immediately after startup.
- Best-in-class balance - Dual blue lasers deliver consistent colour and white balance throughout the projector's life.
- Built to last - Inorganic optical components extend reliability and peace of mind.



## Virtually Maintenance Free

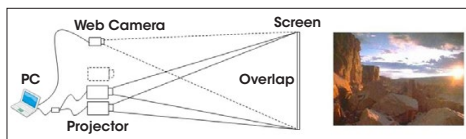
- Filter free design.
- IP5X certified Sealed LCD cooling system prevents dust from reaching the optics and eliminates the need for a filter.
- Peace of mind - No dust artifacts, no image degradation, just long-lasting performance.



## Brighter, Safer Visuals

Boost brightness up to 68,000 lumens with built-in stacking correction (up to four projectors) - perfect for massive screens and high ambient light environments.

Never lose the picture - if one projector goes down, your content stays visible.



## Seamless Big-Screen Impact

Edge blending merges multiple projections into one flawless, high-resolution image - no seams, just a smooth, cinematic display.



## ProAssist™ Total Control, Simplified

Manage multiple projectors with ease using ProAssist™ software.

Fine-tune every detail - from input switching and lens adjustments to edge blending, uniformity, and gamma - all from a simple, intuitive interface.

**ProAssist™**

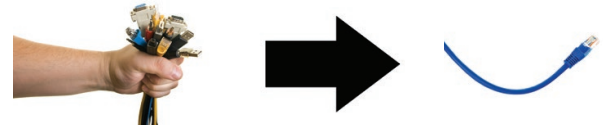




### Built-In HDBaseT: One Cable, Total Simplicity

Streamline installs with a single cable (up to 100m) carrying uncompressed Full HD video, audio, Ethernet, and control signals.

Cut costs, reduce clutter, and enjoy stunning visuals without extra hardware or complex wiring.



### Stay Connected, Stay Flexible

- Multiple digital inputs for fast, seamless switching between presentations.
- Three audio inputs (HDMI1, HDMI2, and HDBaseT) let you easily add sound for a more engaging experience.

### Remote control

Wired and wireless backlit remote allows you to adjust for complete control of the projector's menu structure in a well lit or dark environment. Direct controls such as lamp mode, aspect ratio, volume and input selection eliminates multiple button pushes.



### Digital Inputs

Among the A Series' wide selection of inputs are dual HDMI w/HDCP and HDBaseT w/HDCP for connecting to high-definition sources such as Blu-ray players, cable boxes, satellite receivers and personal computers.



### Cable Cover

This included accessory creates a clean look for your installation, while hiding signal cables and the power cord.



## Advanced Software Features

### Geometric Correction

Projecting an image isn't confined to a standard flat screen or wall with the A Series. Geometric correction allows these models to project an image on spheres, cylinders, corner angles and many more non-standard surfaces.

Vertical cylindrical convex screen



Horizontal cylindrical concave screen



Vertical cylindrical concave screen

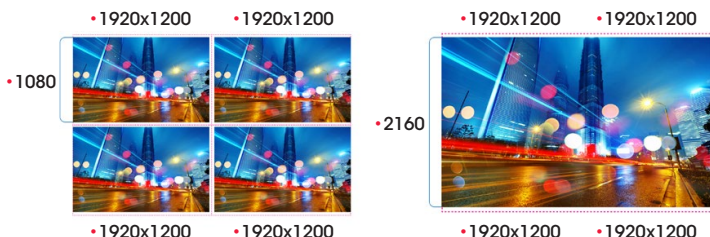


Corner



### Screen Splitter

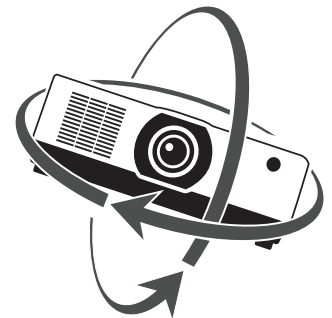
Sharp is committed to bringing the latest and greatest innovation to projectors. Multi-display capabilities and TileMatrix technologies are integrated into the new A Series projectors. This processing is all done internally and therefore eliminates the additional hardware typically required to produce a beautiful 4K resolution image.



Screen Splitter (Multi-Display) by Daisy Chain

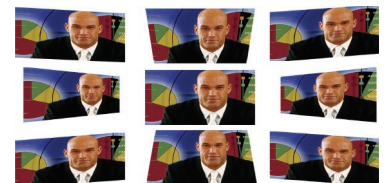
### Roll Free

When installation requirements dictate the projector needs to be placed at different angles the A Series with Roll Free capabilities assures it is the correct projector of choice.



### Cornerstone

Enhanced keystone correction allows for horizontal, vertical and diagonal image correction for aligned images even when the projector is set up at an angle to the screen.



## Unique Features That Make a Difference

**Maintenance made easy** – IP5x sealed LCD cooling system eliminates filters, cutting ongoing maintenance and lowering total cost of ownership.

**Simplified connectivity** – HDBaseT in/out lets video, audio, and control signals pass between projectors effortlessly.

**Quiet, focused experience** – Low-noise operation keeps audiences engaged without distractions.

**Seamless integration** – Competitor command support reduces the need for reprogramming, saving time and installation costs.

## Warranty

Registered owners receive a five (5) year or 20,000 hours (whichever comes first) parts and labour warranty.

## In the Box

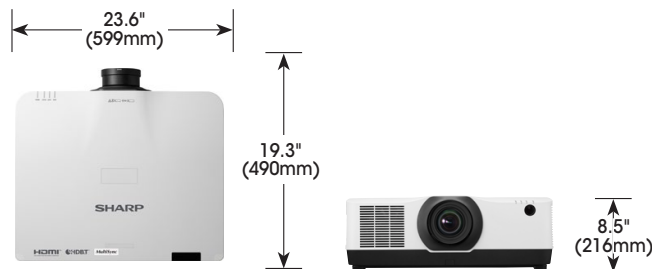
Remote control, batteries, power cord, cable cover, quick start guide, product registration card.

## Accessories\*

<b>RMT-PJ40</b>	Replacement Remote Control
<b>Optional Lenses</b>	XP-40ZL, XP-41ZL, XP-43ZL, XP-44ML, XP-50ZL
<b>IPJ2000CM</b>	Ceiling Mount
<b>AEC006009</b>	Adjustable Extension Column, 6" - 9"
<b>AEC012018</b>	Adjustable Extension Column, 12" - 18"
<b>AEC0203</b>	Extension Column, 2' - 3'
<b>AEC0305</b>	Adjustable Extension Column, 3' - 5'
<b>XP-02LK</b>	Mounting Bracket for XP-44ML

## Ordering Model Numbers

<b>XP-A824U-B</b>	<b>XP-A104U-B</b>
<b>XP-A824U-W</b>	<b>XP-A104U-W</b>



Model		XP-A824U	XP-A104U
Display Technology		0.76" LCD	
Light Output (lumens)	Brightness (typical)	8,200 Lumens	10,000 Lumens
	Brightness (maximum)	8,600 Lumens	10,500 Lumens
Resolution	Screen	WUXGA 1920x1200	
	Maximum	4K 4096 x 2160	
Aspect Ratio		16:10 (Supports 4:3, 16:9, 21:9)	
Contrast Ratio (up to)		3,000,000:1 (with Dynamic Contrast)	
Laser Life (up to)		20,000 hours	
Screen Size (diagonal)		XP-50ZL, XP-40ZL, XP-41ZL, XP-43ZL: 60 to 500 in. / 1.52 to 12.7m, XP-44MK-02: 97-400 in. / 2.46 to 10.16 m	
Throw Ratio	XP-44ML	0.32:1	
	XP-50ZL	0.6-0.76:1	
	XP-40ZL	0.79 - 1.11:1	
	XP-41ZL	1.30 - 3.02:1	
	XP-43ZL	2.99 - 5.93:1	
Projection Distance		2.5 to 68.5 ft. / 0.74 to 20.9m	
Projection Angle		10.3 to 10.8° tele / 13.7 to 14.5° wide	
Lens*	Zoom	Motorized	
		XP-44ML 1.0x	
		XP-50ZL 1.25x	
		XP-40ZL 1.4x	
		XP-41ZL 2.3x	
		XP-43ZL 2.0x	
	Focus	XP-44ML Motorized zoom / focus, F=2.0, f= 6.27, 6.8 lbs. / 3.1 kg	
		XP-50ZL Motorized zoom / focus, F=1.9 to 2.1, f= 49.7 to 99.8mm, 5.5 lbs. / 2.5 kg	
		XP-40ZL Motorized zoom / focus, F=2.0 to 2.5, f= 13.3 to 18.6mm, 3.5lbs. / 1.6 kg	
		XP-41ZL Motorized zoom / focus, F=1.7 to 2.0, f= 21.8 to 49.8mm, 3.7 lbs. / 1.7 kg	
		XP-43ZL Motorized zoom / focus, F=2.2 to 2.6, f= 49.7 to 99.8mm, 3.7 lbs. / 1.7 kg	
	Shift	+50/-10% Vertical, +/-20% Horizontal	
	Shutter	Laser Shutter	
Keystone Correction		+/- 40° horizontal, +/-40° vertical	
Synchronization Range	Horizontal	Analog: 15-100kHz, Digital: 15-153kHz	
	Vertical	Analog: 48-120Hz, Digital: 24-120Hz	
Supported Video Standards		NTSC, NTSC4.43, PAL, PAL-60, PAL-M, PAL-N, SECAM	
SD/HD Video Signal Compatibility		480i, 480p, 576i, 576p, 720p, 1080i, 1080p, 4K	
PC Signal Compatibility		VGA, SVGA, XGA, SXGA, SXGA+, UXGA, WUXGA, Quad HD	
Macintosh Compatibility		Yes	
Input Terminals	RGB1 (digital)	HDMI (V2.0) w/HDCP (V1.4/2.2)	
	RGB2 (digital)	HDMI (V2.0) w/HDCP (V1.4/2.2)	
	RGB3 (digital)	HDBaseT w/HDCP (V1.4/2.2)	
Output Terminals	Monitor Out	HDBaseT w/HDCP (V1.4/2.2)	
	Audio Out	Stereo Mini Jack	
External Control		9-Pin D-Sub, Wired Remote, HDBaseT, RJ-45, USB (USB 2.0)	
Sync Compatibility		Separate Sync / Composite Sync / Sync on G	
Power Requirements		100-240V AC, 50/60 Hz	
Input Current		8.6A - 3.8A	10.5A - 4.6A
Power Consumption (ECO off/ECO Mode/Standby/Standby-Power Saving)		635W / 515W / 0.8W / 0.22W	750W / 610W / 0.8W / 0.22W
Installation Orientation		Floor/Front, Floor/Rear, Ceiling/Front, Ceiling/Rear	
Product Dimensions (WxDxH)		23.6 x 8.5 x 19.3 in. / 599 x 216 x 490 mm	
Net Weight		53.1 lbs. / 24.1 kg	
Shipping Dimensions (WxDxH)		28.9 x 14.1 x 24.8 in. / 735 x 359 x 631 mm	
Gross Weight		63.3 lbs. / 28.7 kg	
Fan Noise		30 dB normal / 28 dB eco	35 dB normal / 32 dB eco
Regulations	US	USA UL60950-1: 2005+A1: 2009+A2: 2013, IEC 60825-1:2014 (Ed.3), FCC Part15 Subpart B (ANSI C63.4:2014)	
	Canada	CAN/CSA C22.2 No.62368-1-18, 3rd Edition, ICES-003 Issue 7 (ANSI C63.4:2014)	
Operating	Altitude	0 to 3650 m (12,000 ft)	
	Temperature	32-104°F / 0-40°C	
	Humidity	20 to 85% Humidity (Non-Condensing)	
Storage	Altitude	0-12,000m / 0-39,370 ft (above sea level)	
	Temperature	14-122°F / -10 50°C	
	Humidity	20% - 80% (non-condensing)	

\* Lens does not ship with the projector. Additional accessories are available, including screens, carts, mount accessories and replacement cables.

Visit [www.sharp.ca](http://www.sharp.ca) for details.



# SHARP®

SHARP ELECTRONICS OF CANADA LTD.  
5995 Avebury Road, Suite 900  
Mississauga, Ontario L5R 3P9  
1-800-567-4277 • [www.sharp.ca](http://www.sharp.ca)

Printed in Canada.  
VSG-VS-XP-A824U/A104U-B-E-PDF-11/2025