

SHARP®

Simply Better Living

SuperSteam+™ Superheated Steam and Convection Built-In Wall Oven

SSC2489DS

1.1
CU. FT.

24"
WIDTH

WiFi Enabled, 3-in-1 Combination Smart Wall Oven

Mobile Application for iOS and Android Devices

Cooks with Superheated Steam at Browning Temperatures, Gentle and Regular Steam, Radiant Heat & Convection

New Steam Bake and Water Bath Settings

Built-In Ready 24" Oven Can Be Installed in a Wall, Under-the-Counter or Kitchen Island With No Additional Trim Kit Needed

Brilliant LCD Display with Touch Navigation

No Wet-Wall Installation or Water Line Required, Standard 120V Power



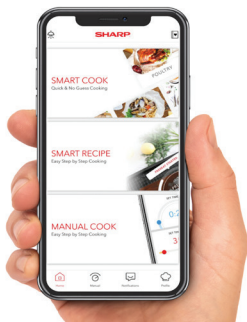
IT'S TIME TO RETHINK STEAM

The Sharp SuperSteam+™ Built-In Wall Oven is the start of a cooking revolution. The innovation is simply that steam can be hotter, cook better, and promote healthy living.

Regular steam only reaches 212°F, but the SuperSteam+™ also creates **superheated steam at 485°F**. Meats and proteins will brown. Sugars will caramelize. You can grill without smoke, roast without drying and your food is crispy on the outside, tender and juicy on the inside. And don't forget, the Sharp SuperSteam+™ built-in wall oven is also a powerful convection oven with even heating for superior baking. That's three ovens in one! Now, the new Sharp SuperSteam+™ built-in wall oven features Steam Bake for superior breads, and Water Bath for cheesecakes, custards and puddings.

Get started right away with built-in recipes, and download the Sharp SuperSteam+ Oven app to enable the smart features and access thousands of recipes powered by SideChef. Cleanup is a breeze with two, preset cleaning modes. There is even a sterilize option for canning jars, lids and small utensils.

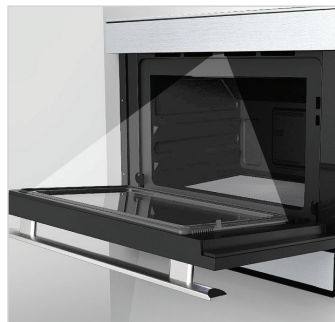
The removable reservoir means no special plumbing or wet-wall installation is required. And with a common, 120V power requirement, you can just plug it into a regular outlet and you're ready to go.



Enjoy the extended features of your SuperSteam+™ Oven, including remote start and notifications.



The Water Bath feature is a virtual Bain-Marie for slow-baking custards, cheesecakes, and puddings.



The bright, Stage Lighting makes it easy to snap a photo with your phone and share your creations!



Compact, removable 24 oz. water tank is convenient, lightweight, easy to fill, and easy to access

SHARP ELECTRONICS OF CANADA LTD.
335 Britannia Road East, MISSISSAUGA, ONTARIO L4Z 1W9
Tel: 905-568-7140. www.sharp.ca
01-29-2021 v2

SHARP®

Be Original.



Simply Better Living

SuperSteam+™ Superheated Steam and Convection Built-In Wall Oven

SSC2489DS

1.1
CU. FT.

24"
WIDTH

SPECIFICATIONS

DESIGN

Finish	Stainless Steel, Black Glass
Control Location	Right Side on Door
Control Type	Full Color Touch Navigation, WiFi Indication and 4 Mechanical Buttons on Door

OVEN INTERIOR

Capacity (cu. ft.)	1.1 cu. ft.
Finish	Non-Stick
Colour	Speckled Gray
Interior Light	Incandescent
Stage Lighting	LED Light

FEATURES

Cooking Modes	Manual, Smart Cook and Smart Recipe
Cooking Methods	
Superheated Steam	Steam Roast and Steam Grill
Dry Heat	Convection Bake
Steam Bake	Steam Bake Breads, Steam Bake and Water Bath
Steam	Steam Cook, Steam Keep Warm and Steam Refresh
Oven Settings	WiFi Connect, Sound, Control Lock, Demo, Temperature, and Remote Start
Cleaning Modes	Sterile, Descale, Oven Cleaning - Steam and New Oven Clean

TEMPERATURE GUIDE / MAX COOK TIME

SuperSteam Grill	485°F / 40 Minutes
SuperSteam Roast	212°F - 485°F / 2 Hours
Convection Bake	212°F - 485°F / 2 Hours
Steam Bake	
Breads	350°F - 425°F / 2 Hours
Water Bath	250°F - 300°F / 2 Hours
Steam Cook	
Steam Cook	212°F / 1.5 Hours
Steam Keep Warm	175°F / 1 Hour
Steam Refresh	130°F / 2 Hours
Steam Proof	100°F / 2.5 Hours

ADDITIONAL FEATURES

Mobile Application	Yes, available for iOS and Android 28 Smart Cook Recipes 39 Smart Cook Settings
Voice Control	Yes, home assistant not included
WiFi Connectivity	Yes
Door Drip Tray	Yes
Water Reservoir Capacity	24 oz.
Accessories	2 Baking / Steam Trays 2 Grill / Broil Racks

DIMENSIONS & WEIGHT (in./lbs.) (w x h x d)

Cavity Dimensions	15.55" x 9.45" x 12.01"
Product Dimensions	23.5" x 19.5" x 17.0" (without handle) 23.5" x 19.5" x 18.9" (with handle)
Shipping Dimensions	32.1" x 26.0" x 26.7"
Product Weight / Shipping Weight	63.0 lbs. / 70.0 lbs.

WARRANTY / UPC

Parts	1 year limited
Labour	1 year limited
UPC	074000620698

*Internal capacity calculated by measuring maximum width, depth and height. Actual capacity for holding food is less.

Product specifications and design are subject to change without notice.

© 2020 Sharp Electronics of Canada Ltd. All rights reserved.

Sharp and all related trademarks are trademarks or registered trademarks of Sharp Corporation and/or its affiliated companies. All other trademarks are property of their respective owners.

SIMPLY BETTER LIVING

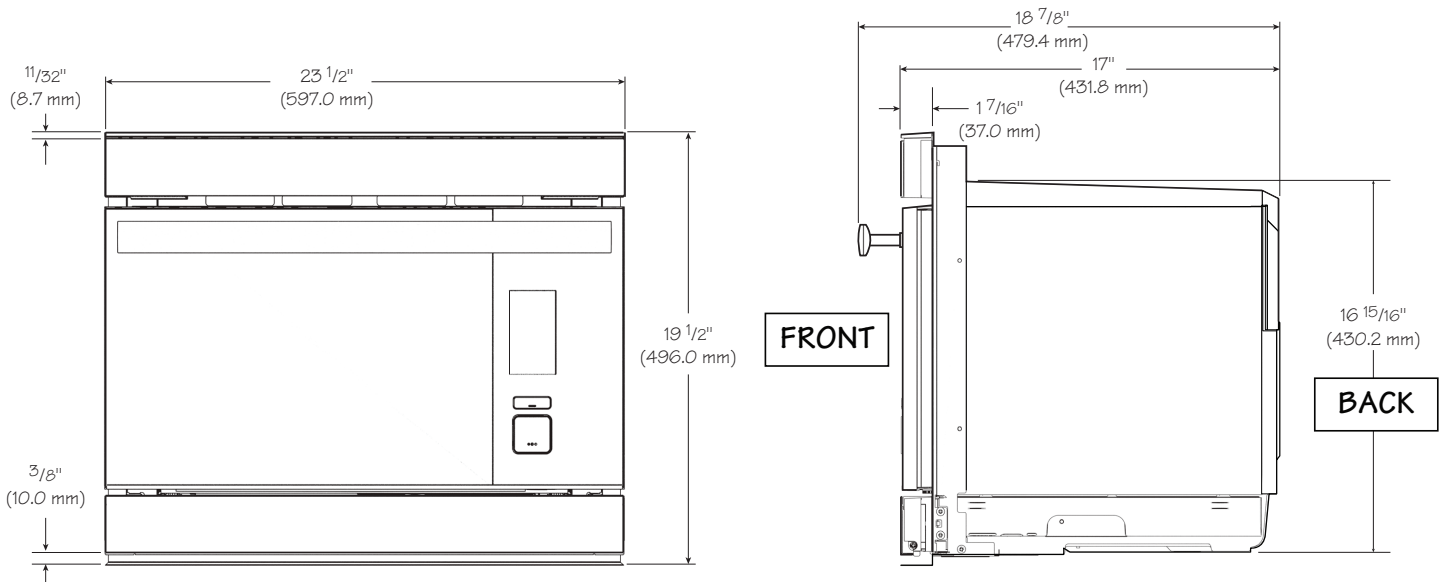
At Sharp Electronics of Canada, we are committed to Simply Better Living. Our innovative home appliance products are SIMPLE to use, BETTER than the competition, and encourage a HEALTHY LIFESTYLE.

SHARP ELECTRONICS OF CANADA LTD.
335 Britannia Road East, MISSISSAUGA, ONTARIO L4Z 1W9
Tel: 905-568-7140. www.sharp.ca

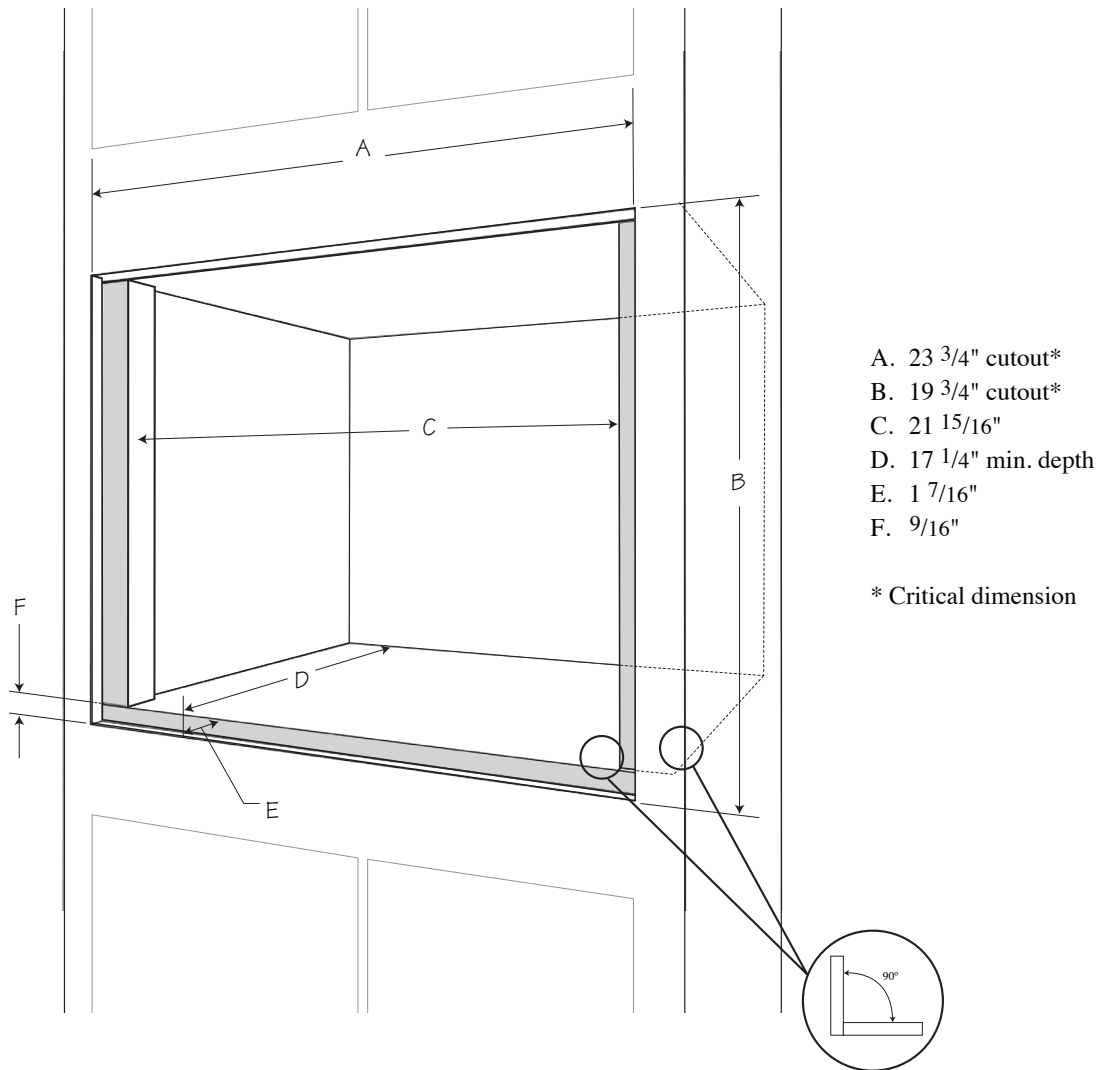


SHARP
Be Original.

OVEN MEASUREMENTS



CLEARANCES AND DIMENSIONS FOR FLUSH MOUNT



Ensure the shelf that the appliance rests on is 90° to the cabinet face.

CLEARANCES AND DIMENSIONS FOR STANDARD SURFACE MOUNT

