

Service Information

SERVICE TOOL VERSION UPGRADE (Ver.1.5.2.0)

1. Model Name PN-L803C, PN-80TC3, PN-L803CA, PN-80TC3A
2. General The version of the service tool has been upgraded.
3. Description Service Tool Ver.1.5.2.0

[PN-L803C/80TC3/L803CA/80TC3A]

	Before change Version		After change Version	Comment
Service tool	1.4.2.0	⇒	1.5.2.0	
Main firmware	1.070	⇒	1.080	
	2.070	⇒	2.080	
	-	⇒	3.080	NEW
		⇒		
Sub firmware	1.020.110	⇒	1.020.110	No change
Touch panel firmware	1.04	⇒	1.04	No change
Touch panel controller	010609	⇒	010609	No change
Display Port RX firmware	1.2.4.134	⇒	1.2.4.134	No change
Display Port TX firmware	1.1.4.36	⇒	1.1.4.36	No change
Double Speed Drive(DSD) firmware	8.32	⇒	8.32	No change
Electrostatic Key(KEY) firmware	1.00	⇒	1.00	No change

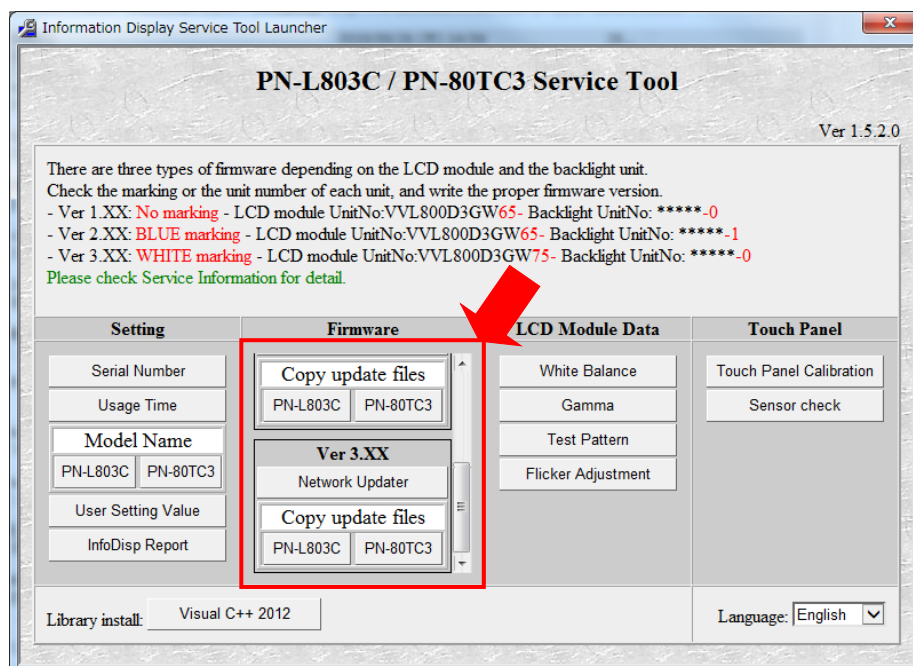
[Item of change]

● Service tool

UI has been modified to select three types of firmware (Ver.1.XX, Ver.2.XX and Ver.3.XX).

Please refer to Service Information PNF-A798 for proper use of Ver.1.XX and Ver.2.XX.

Ver.3.XX is for PN-80TC3A manufactured for Europe in August and September 2019. Refer to Service Information PNF-A806 for tentative part change for August and September 2019 production.



- Main firmware

- (1) DDR memory on LCD-TCON board has changed from October 2019 production. Main firmware which supports new DDR memory has been released due to this change. Please refer to the [Service Information PNF-A809](#) concerning the change in DDR memory on LCD-TCON board.
New Main firmware supports both old and new DDR memory.
Please note that if new DDR memory and old Main firmware are combined, it will take longer by approx. 10 sec to turn on screen after switching on the monitor.

4.Action

(For the field)

Please use the above tool as needed basis.

When the firmware rewriting is required due to the replacement of the PWB etc, please use the latest version

Please apply the firmware in accordance with Backlight LED unit emdedded to the target model.

LCD module unit	Backlight LED unit	Main firmware	Mark on the rating plate
OLD (DUNT-2192MPSZ)	OLD (*****-0)	Ver.1.080	None
OLD (DUNT-2192MPSZ)	NEW (*****-1)	Ver.2.080	Blue sticker
NEW (DUNT-2192MPS1)	NEW (*****-1)		
DUNT-2203MPSZ	OLD (*****-0)	Ver.3.080	White sticker

(For the inventory)

None

(For the production)

Main firmware Ver.2.080 is applied from October 2019 production.

[About PN-80TC3A for Europe manufactured in August and September 2019]

Main firmware Ver.3.070 has been installed.

Unlike Ver.3.080 just released, Ver.3.070 does not support new DDR memory on LCD-TCON board.

[PN-L803C/80TC3/-L803CA/80TC3A]
(Release history of main firmware)

Version [Checksum]	Detail	Action
1.030 [20570A4F1A]	New release (for PN-L803C)	
1.040 [7B0E23A51A]	The maximum screen size setting for 70 inches was recognized in EDID for all terminals. The modification has been made so that setting for 80 inches is recognized instead. Problem with writing EDID UPDATE data for Model Type RU and CN has been fixed.	July 2015
1.060 [083633C71A]	Specification change to support new China GB standards (for China only)	December 2016
1.070 [3405D6781A] 2.070 [C21FF9941A]	On very rare occasions, the screen could not be lit up at the time of power-on. This issue has been corrected. The main firmware Ver.2.07 supporting the new Backlight LED unit has been released.	August 2019
3.070 [5B3857DF1A]	DUNT-2203MPSZ(LCD module unit for PN-E803) has been supported	August 2019
1.080 [48E6DD6D1A] 2.080 [072672C21A] 3.080 [75AFDE821A]	Change in DDR memory on LCD-TCON board is supported.	October 2019

(Release history of sub firmware)

Version [Checksum]	Detail	Action
1.020.110 [01006365]	New release	July 2015

(Release history of Touch panel firmware)

Version [Checksum]	Detail	Action
1.04 [000004C5]	New release	July 2015

(Release history of Touch panel controller)

Version [Checksum]	Detail	Action
010509 [E2429602]	New release (for PN-L803C)	
010609 [B48D1474]	The reset mechanism has been implemented so that it is executed when Touch panel PWB stops operation.	July 2015

(Release history of Display Port RX firmware)

Version [Checksum]	Detail	Action
1.2.4.134 [FC48969B]	New release	July 2015

(Release history of Display Port TX firmware)

Version [Checksum]	Detail	Action
1.1.4.36 [FF78EE2E]	New release	July 2015

(Release history of Double Speed Drive(DSD) firmware)

Version [Checksum]	Detail	Action
8.32 [none]	New release	July 2015

(Release history of Electrostatic Key(KEY) firmware)

Version [Checksum]	Detail	Action
1.00 [none]	New release	July 2015