

SHARP®

D Series
Indoor COB dvLED
LD-D091 / LD-D121 / LD-D151

**MEET YOUR
SOLE MATE.**



Display Tech That Works as Hard as You Do

The Sharp D Series brings next-level visuals in a tough, future-ready design built for high-traffic spaces. With three fine pixel pitch options (0.95mm, 1.2mm, 1.5mm), you'll get sharp resolution even up close. The front-serviceable design makes upkeep fast and stress-free, while its durability, high contrast, and brightness keep content looking bold in any environment - retail, transit hubs, museums, public spaces, and beyond.

Powered by the latest Flip Chip COB (Chip-on-Board) technology, the D Series delivers reliable performance with standout image quality. From planning to install to ongoing support, Sharp and our partners have your back with custom-fit solutions so you can stay locked in on what really matters - your business.

Benefits

Designed with Multi-Colour Flip Chip COB (Chip-on-Board) diodes with a high refresh rate delivering excellent image quality

Flip Chip COB technology provides a durable LED solution with superior brightness, deep black levels and contrast ratio up to 20000:1

Up to 40% lower power consumption and reduced heat when compared to traditional SMD LEDs

Front serviceable cabinets allow for installation in difficult to access areas

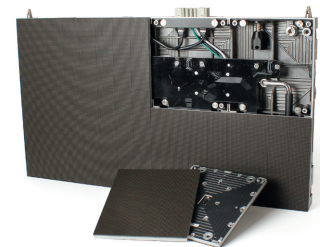
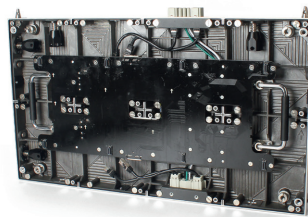
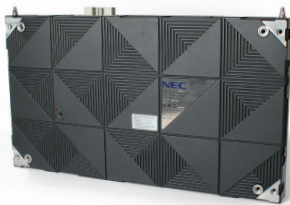
Hot-swappable pixel cards can be replaced without turning the display off

Shallow depth and lightweight design allows for greater installation flexibility while also meeting ADA requirements

Specifications

Direct View LED Module	LD-D091	LD-D121	LD-D151
Panel Technology	Direct View LED		
Pixel Configuration	Flip Chip COB		
Panel Resolution	640 x 360	480 x 270	384 x 216
Aspect Ratio	16:9		
Pixel Pitch	0.95mm	1.26mm	1.58mm
Brightness (typical)	800 cd/m ²		
Contrast Ratio (typical)	20,000:1		
Viewing Angle (typical)	75/75 horizontal / 80/80 vertical	80/80 horizontal / 80/80 vertical	
Dimming Capability	256 levels		
Colour Processing	Up to 16 bit		
Displayable Colours	281 Trillion		
Colour Gamut (cover ratio)	Adobe: 99 DCI: 95		
Refresh Rate	Up to 3840Hz		
Lifetime (typical)	100,000 Hours*		
Input Terminals Digital	1x 1000BaseT RJ-45		
External Control	RS232 / USB		
On (typical)	28W	40W	36W
Max	60W	70W	65W
Maximum Cabinets per 120V/20A Circuit	20		
Dimensions (WxHxD)	23.9 x 13.5 x 1.9 in / 608 x 342 x 49 mm		
Diagonal	27"		
Weight (Net)	15.4lbs / 7.0kg		
Operating Temperature	-4° to 104°F / -20° to 40°C		
Operating Humidity	10% to 80%		
Storage Temperature	-4° to 113°F / -20° to 45°C		
Storage Humidity	10% to 85%		
IP Rating	IP20		
Limited Warranty	3 years		

*Does not constitute a warranty beyond the three year limited warranty period.



Visit www.sharp.ca for details.

SHARP®

SHARP ELECTRONICS OF CANADA LTD.
5995 Avebury Road, Suite 900
Mississauga, Ontario L5R 3P9
1-800-567-4277 • www.sharp.ca

Printed in Canada.
VSG-VS-LDD-B-E-PDF-03/2026