

Driver Setup Utility

Operation Manual

Ver.1.4

Contents

Scope	2
Basic Information.....	2
Operating Environment	2
Features.....	3
Support Features for each emulation.....	4
How to use.....	5
Required Information	5
Advance Preparation.....	5
How to use.....	6
Save as MSI format.....	7
Silent Installation	8
Installation By User Authority.....	9
Customization for Printing Feature	9
Default Setting for Printing Feature.....	10
How to Install.....	11
Troubleshooting	12
Tredemark Acknowledgments	12

Prerequisite

- This manual assumes that the trainer/user has practical knowledge about Windows computers.
- For items concerning the OS (operating system), please refer to the OS manual or help.
- In this manual, Windows 10 is used for the Windows environment for screen shots and operation. The screen shots may differ depending on the version of the OS (operating system).

Caution

- The contents of this manual may change without notice for improvement purposes.
- You may not transfer or copy all or part of this manual without notifying the company.

Scope

This document explains operational step of Driver Setup Utility.

There is important information that you must confirm before using this utility. Please read this document by all means before using this utility.

Regarding how to print from driver or other settings, please refer to instruction manual of each printer driver or PC-Fax driver.

Basic Information

Operating Environment

Items	Description
Support OS	Windows 8.1 (32/64bit) Windows 10 (32/64bit) Windows 11 Windows Server 2012 Windows Server 2012 R2 Windows Server 2016 Windows Server 2019 Windows Server 2022
Display	1024 x 768 dots resolution and 16-bit color or higher is recommended.

* The support OS for printer driver and PC-Fax driver depends on the support OS for original printer driver and PC-Fax driver.

Features

This utility provides following features.

1. Save as MSI format Feature

This feature enables to save as MSI format.

2. Silent Installation

- Installation without user operation.
- Auto configuration (if connected to MFP)
- drivers of multiple models can be installed by one time operation

However, following limitation exists.

- It's not available to automatically switch 32/64bit if installer don't have drivers for both 32 and 64bit.
- When UAC (User Account Control) is displayed, user operation is required.

3. Installation By User Authority

It enables to install by "Users Authority" by embedded administrator ID/Password to the driver package.

4. Customization for Printing Feature

This feature enable to create customized driver with following functions.

- Forced B/W Print

This function enable to create the driver which is prohibited color print. If this function is used, "Add 2 Color Print" is not available.

- Add 2 Color Print

This function enable to create the driver which is added 2 color print. If this function is used, " Forced B/W Print" is not available.

- Change Driver Name

In order to install multiple drivers with different default settings from the product driver on the same PC to operate, drivers with aliases can be created.

5. Default Setting for Printing Feature

This feature enables to set default setting value for following functions.

- 2-Sided Printing
- Color Mode
- Staple
- Printing Policy: User Authentication
- Printing Policy: Document Filing
- Printing Policy: Use Windows Login Name as 'Login Name'

Support Features for each emulation

Supporting features depend on each emulation. See following table for detail.

In addition, target drivers of this utility are for Windows only.

Color Model

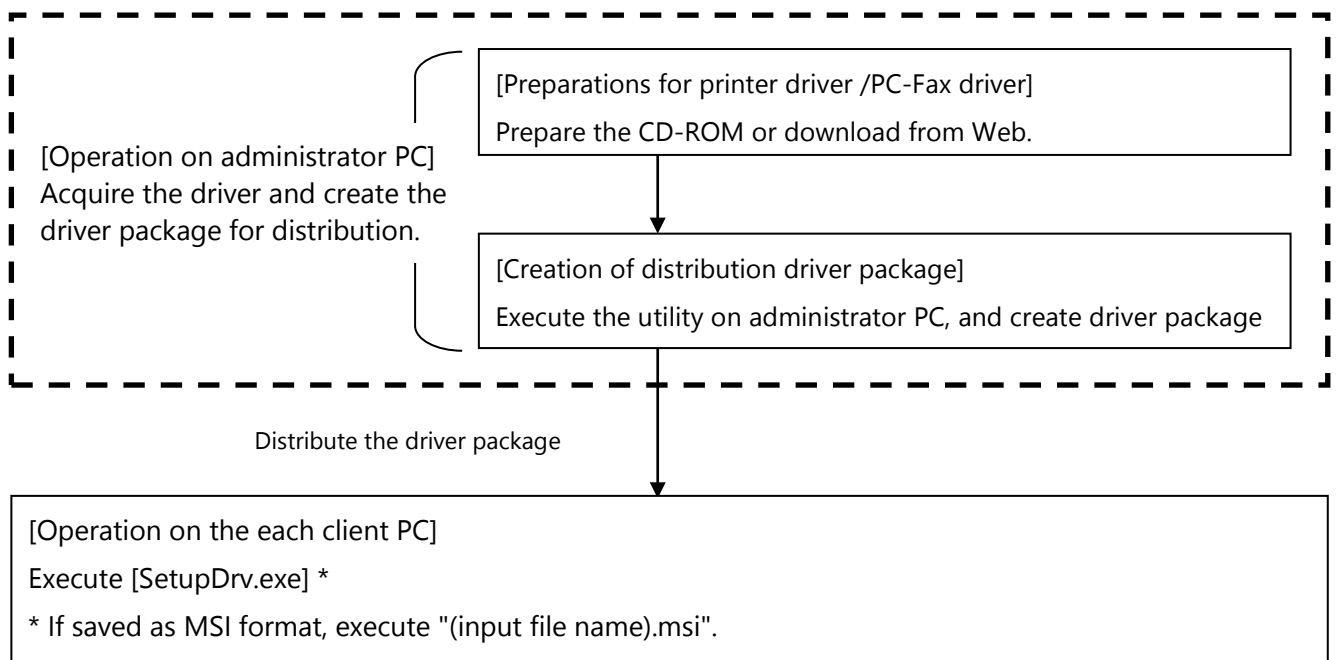
Features		PCL6	PS	SAPL-c	PC-Fax
Save as MSI format		Yes	Yes	Yes	Yes
Silent Installation		Yes	Yes	Yes	Yes
Installation By User Authority		Yes	Yes	Yes	Yes
Customization for Printing Feature	Forced B/W Print	Yes	No	Yes	No
	Add 2 Color Print	Yes	No	No	No
	Change Driver Name	Yes	Yes	Yes	No
Default Setting for Printing Feature		Yes	Yes	Yes	No

Mono Models

Features		PCL6	PS	SAPL	PC-Fax
Save as MSI format		Yes	Yes	Yes	Yes
Silent Installation		Yes	Yes	Yes	Yes
Installation By User Authority		Yes	Yes	Yes	Yes
Customization for Printing Feature	Forced B/W Print	No	No	No	No
	Add 2 Color Print	No	No	No	No
	Change Driver Name	Yes	Yes	Yes	No
Default Setting for Printing Feature		Yes	Yes	Yes	No

How to use

Required Information



Advance Preparation

1. Store the Driver Setup Utility in any folder.
* Don't include the 2 byte code (Japanese character or 2 byte alphabetic character) in created folder path.
Example) C:¥Temp¥SharpTool
2. Inset the CD-ROM which have target printer driver or PC-Fax driver, or download target printer driver or PC-Fax driver from Web and extract the driver. * Don't include the 2 byte code (Japanese character or 2 byte alphabetic character) in created folder path.
Example) C:¥Temp¥CD_Drv
3. Create the any folder to save created driver package. * Don't include the 2 byte code (Japanese character or 2 byte alphabetic character) in created folder path.
Correct) C:¥Temp¥Tool_Drv
Wrong) C:¥Documents and Settings¥xxxx¥desktop¥[output folder]

How to use

This section explains how to use the each features

1 Double click the DriverSetupUtility.exe.
Following screen is displayed.

2 Following screen is shown.
Input the path of printer driver or PC-Fax driver into [Base Driver].

When you click the [Browse] button, the dialog box is shown. You can select the folder which is stored driver package and click [OK] button.

3 Input the path of created printer driver or PC-Fax driver into [Stored to].

When you click the [Browse] button, the dialog box is shown. You can select the folder to store driver package and click [OK] button.

4 Select features that you want to use. Please see following link for detail.

5 When all settings are finished, click [Create] button to create customized drivers.

The screenshot shows the 'Driver Setup Utility' window with the SHARP logo in the top right corner. The window is divided into several sections:

- Base Driver:** A text input field with a 'Browse' button to its right.
- Stored To:** A text input field with a 'Browse' button to its right.
- Save as MSI format:** A checkbox.
- File Name:** A text input field followed by a '.msi' extension.
- Silent Installation:** A section containing:
 - Model Name:** A dropdown menu.
 - IP Address:** A text input field.
 - Buttons:** 'Settings', 'Add', and 'Delete' buttons.
- Target Drivers:** A large empty text area.
- Installation by User Authority:** A section with a user icon and the text 'Account Name, Domain Name, Password'.
- Customization for Printing Feature:** A section with a gear icon and the text 'Force B/W Print, Add 2 Color Print, Change Driver Name'.
- Default Setting for Printing Feature:** A section with a document icon and the text 'Color Mode, 2-Sided Printing, Staple, etc.'.
- Version 1.90:** Displayed in the bottom left corner.
- Create and Close buttons:** Located at the bottom right of the window.

Save as MSI format (P.7)

Silent Installation (P.8)

Installation By User Authority (P.9)

Customization for Printing Feature (P.9)

Default Setting for Printing Feature (P.10)

Save as MSI format

"Save as MSI format" feature can be used with the following OS.

- Windows 8.1
- Windows 10
- Windows 11

This feature needs .NET Framework 3.5 and 4.x.
(Windows 8.1 / 10 / 11 requires .NET Framework 3.5 to be enabled. Please see page 12.)

1 Check on [Save as MSI format].

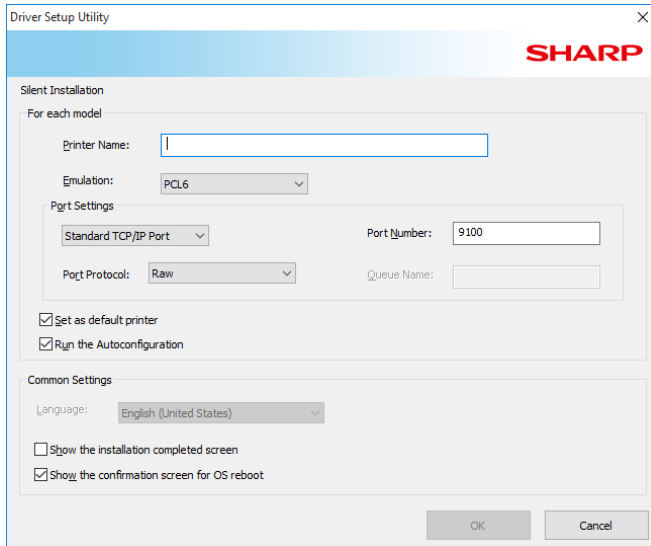
2 Input a file name to [File Name] field.

Silent Installation

1 Select the model name in [Model Name] field. You can select the model name when correct path is entered in [Base Driver].

2 Input the IP address of target MFP to [IP Address] field.

3 Click [Settings] button and following screen is shown.



4 Input the printer name of installed printer driver/ PC-Fax driver in [Printer Name] field. Don't input anything when printer name is not changed.

5 Select the target emulation in [Emulation] field.

6 Select the kind of the TCP/IP port in a driver in [Port Settings]. When [Standard TCP/IP Port] is selected, you can select [Raw] or [LPR]. In addition, when you select [Raw], you can change [port number]. And when you select [LPR], you can [queue name].

7 Check on [Set as default printer] when you want to set the printer driver/ PC-Fax driver as default.

8 Check on [Run the Autoconfiguration in Installation] when you want to run the auto configuration.

9 Select [Language] to install the driver.

For CD-ROM version only

10 Check on [Show the installation completed screen] when show the installation completed screen.

11 Check [Show the confirmation screen for OS reboot] when show the confirmation screen for OS reboot.

12 Click [OK] button and close [Settings] screen when all settings are completed.

13 When click [add] button, and show model name (IP address, printer name) in [Target Drivers]. Drivers displayed in [Target Drivers] field are installed. When you delete the model name from [Target Drivers] field, select the model name in [Target Drivers] field and click [delete] button.

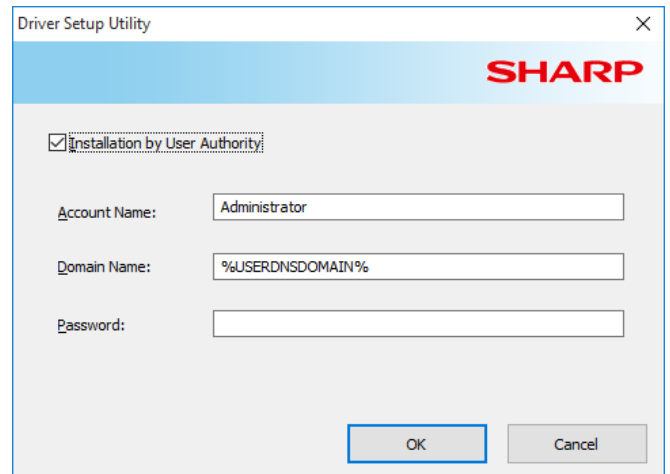
14 When you want to add another driver, continue the Step 5- 13.

Installation By User Authority

1 Click [Installation By User Authority] button of top screen of Driver Setup Utility.

2 Right screen is shown.
Check on [Installation by User Authority].
Input user information of administrator authority in [Account Name], [Domain Name] and [Password]. In [Account Name], the default value is "Administrator". In [Domain Name], the default value is "%USERDNSDOMAIN%".

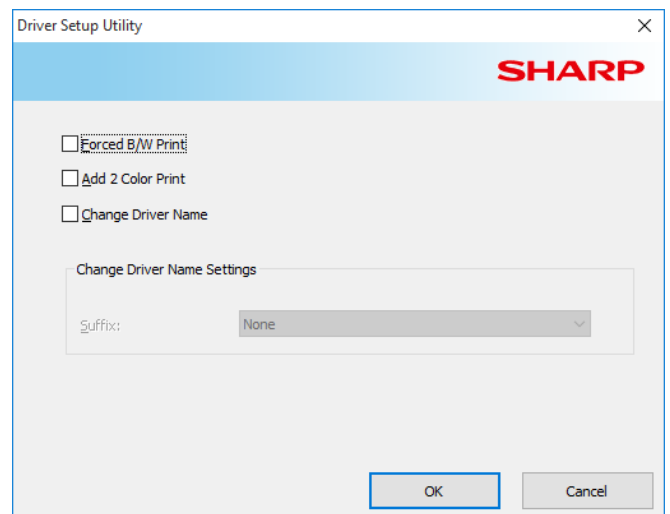
- Don't change the domain name when users of administrator authority exist on domain.
- Change the domain name "%COMPUTERNAME%" when users of administrator authority exist on local PC.
- When you don't input in [Password], this function may not work correctly.



Customization for Printing Feature

1 Click [Customization for Printing Feature] button of top screen of Driver Setup Utility.

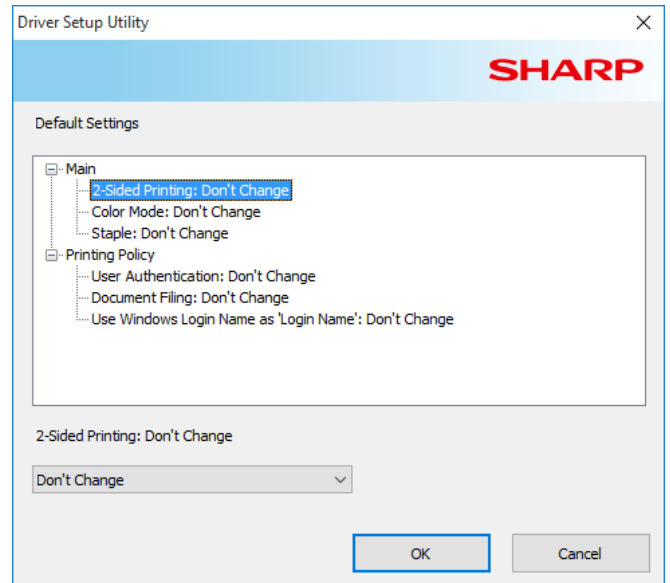
2 Right screen is shown.
Select the function which you want to set.
Regarding [Change Driver Name] function, select suffix for the driver name. If you select "None" in [Suffix] field, [Change Driver Name] function doesn't work.



Default Setting for Printing Feature

1 Click [Default Setting for Printing Feature] button of top screen of Driver Setup Utility.

2 Right screen is shown.
Click the printing preference which you want to set and select default value.
When all settings are completed, click [OK] button and close [Default Setting for Printing Feature] screen.



How to Install

This section is described how to install the driver package which is customize by Driver Setup Utility.

1 Copy the driver package to local folder in local PC.

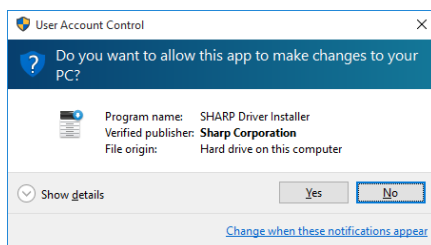
Don't include the 2 byte code (Japanese character or 2 byte alphanumeric character) in the path.

Ex) C:¥Temp¥Tool_Drv

2 Double click [SetupDrv.exe] in driver package.

When the driver package is installed in OS environment which have UAC (User Account Control), command prompt (DOS windows) is displayed. Don't input anything by keyboard or mouse.

When the driver package with "Installation by Users Authority" is installed in OS environment which have UAC (User Account Control), following screen is displayed in some case. Click [Yes] button and continue the installation.



3

In case of not using silent installation, obey the instructions of the screen because a normal installation screen is displayed.

In case of using silent installation, please wait until installation is completed since select screen isn't displayed.

However, if you set [Show the installation completed screen] or [Show the confirmation screen for OS reboot], confirmation screen is displayed.

If you don't set [Show the confirmation screen for OS reboot], OS reboot selection screen isn't displayed. Reboot the OS manually after installation.

Troubleshooting

No.	Trouble	Countermeasure
1	Following error message is shown. Please confirm "Stored to".	Confirm that it does not apply to the following items. <ul style="list-style-type: none">• Not input any path in "Stored to" field• Specify root drive (C¥: etc...)• Same path as "Base Driver" path• Any file or folder exist in "Stored to" field
2	Command prompt is displayed, and the behavior is stopped.	Close the command prompt and execute [SetupDrv.exe] after UAC turns off.
3	[Save as MSI format] is grayed out and cannot be used.	Enable .NET Framework 3.5. *

* Refer to the Microsoft website for how to enable.

<https://docs.microsoft.com/en-us/dotnet/framework/install/dotnet-35-windows-10>

Tredemark Acknowledgments

The following trademarks and registered trademarks are used in conjunction with this software.

- Windows and Windows Server are registered trademarks or trademarks of Microsoft Corporation in the U.S.A. and other countries.